

**RAF LINTON-ON-OUSE [EGXU]**

Yorkshire

**CURRENT UNITS**

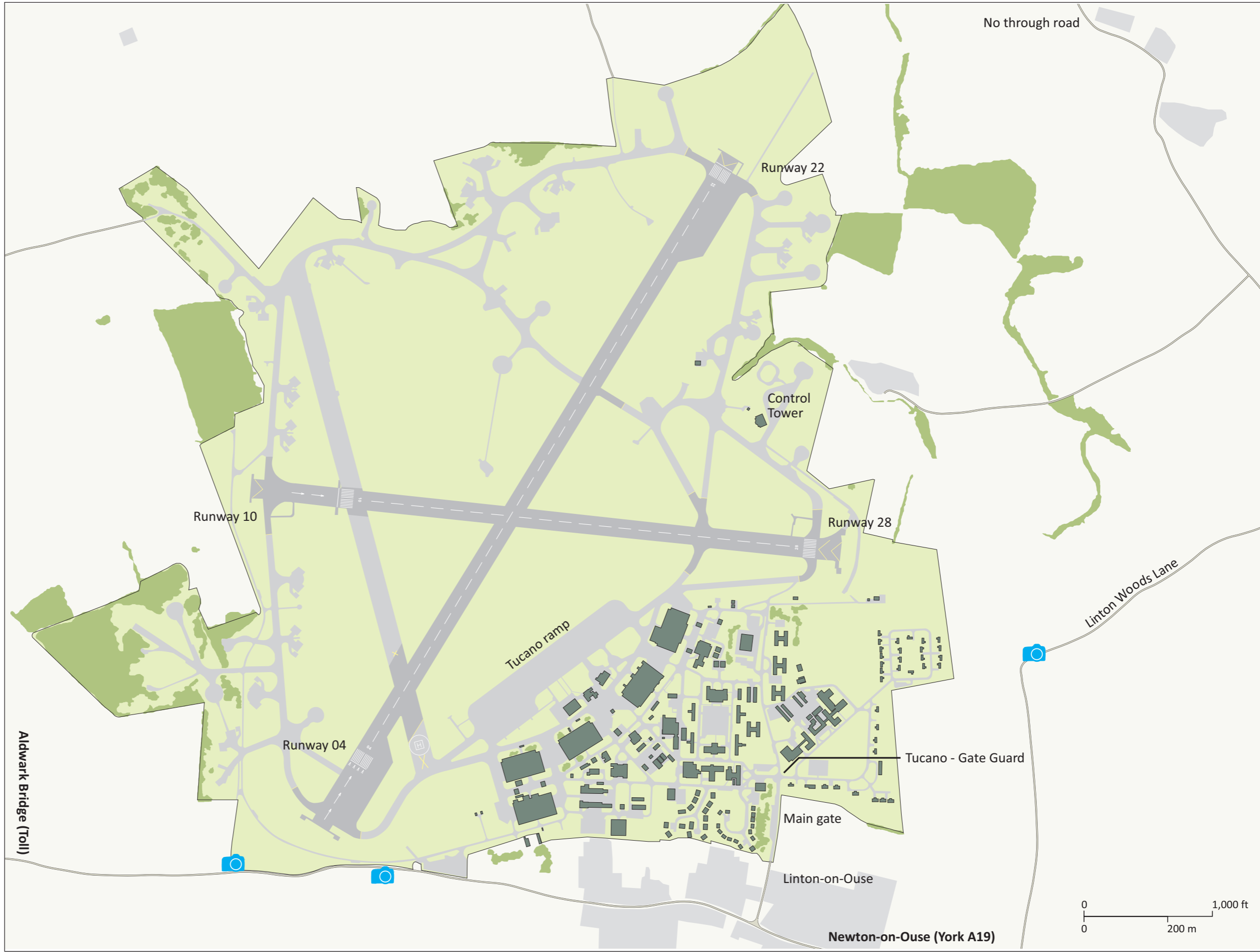
- Royal Air Force
- RAF Linton-on-Ouse Flying Wing
- 72 (R) Squadron      Tucano T1
- 207 (R) Squadron     Tucano T1
- Central Flying School   Tucano T1
  
- University Air Squadron Yorkshire      Tutor T1\*
  
- Air Experience Flight
- 9 Air Experience Flight      Tutor T1\*

\*RAF Church Fenton  
<http://www.raf.mod.uk/raflintononouse/>

**RADIO FREQUENCIES**

Frequency	Usage
278.325	Ground
136.125	Tower
240.825	Tower
283.725	ATIS
281.825	Departures
125.575	Approach
372.125	Approach
369.025	PAR 1
375.575	PAR 2
118.550	Zone
235.200	Zone
134.150	Radar
275.850	Director
362.075	Operations
233.250	Air/Air
244.500	Air/Air
258.825	Air/Air
264.875	Air/Air
368.800	Air/Air
378.050	Air/Air
379.700	Air/Air
396.850	Air/Air

Source: [www.milscanners.co.uk](http://www.milscanners.co.uk)



**Disclaimer**

The information within this map is based upon or drawn from various authoritative sources and whilst all reasonable care has been taken in the preparation of this map no warranties can be given as to its accuracy and/or no reliance should be placed upon the same without further detailed inspection and survey. The publishers cannot therefore accept any liability or responsibility for any loss or damage and indeed would be grateful to receive notification of any errors or inconsistencies. No reproduction whatsoever of this map or any part thereof is permitted without the prior consent of the copyright owners. Respect the land around the base, and do not trespass on or damage any property. Take your rubbish and litter home with you. Do not park in front of crash gates, or on the access tracks leading to them. You will almost certainly be asked move your vehicle as parking here can impede rapid access by the airfield crews to any emergency.

Cartography and designed P. Bush  
 Map reproduced using imagery from Google Maps

© March 2011. Revised December 2011  
 Reproduction of the contents of this map in any manner whatsoever is prohibited without the prior consent of the publisher.

[www.pb-photos.com](http://www.pb-photos.com)